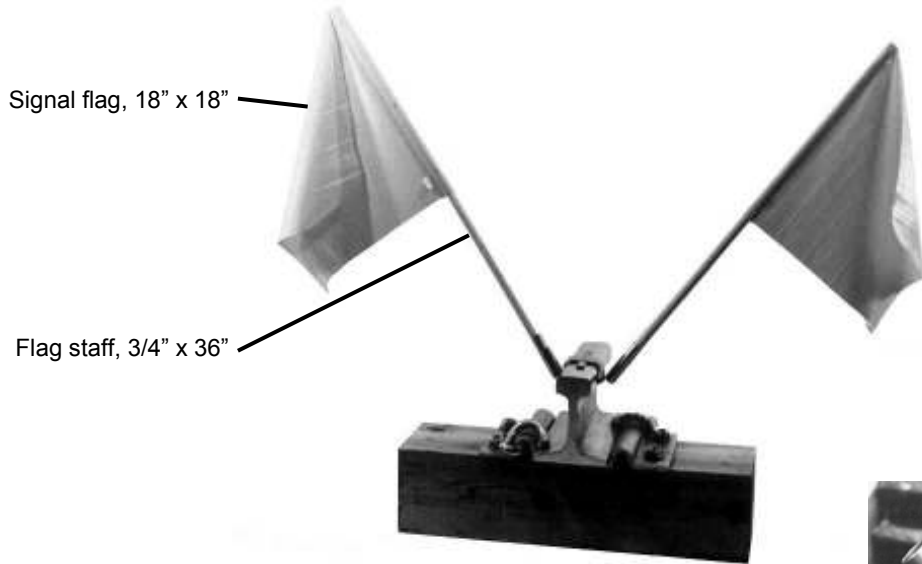


# FLAG HOLDER

## RAIL MOUNTED



Double flag holder shown

### 180245-X0X

OPTION	X
SINGLE HOLDER	0
DOUBLE HOLDER	1

OPTION	X
RED FLAGS	0
BLUE FLAGS	1

J & A #	DESCRIPTION
225428-000	FLAG, RED, 18" X 18"
225428-001	FLAG, BLUE, 18" X 18"
220053-000	HOLDER, DOUBLE, WITH NO FLAGS
220053-001	HOLDER, SINGLE, WITH NO FLAGS



Upper tension bar keeps unit stabilized and tight for all three (3) rail sizes



Unit snaps under the head of the rail on both sides to securely hold flags

- Holder available for one (1) or two (2) flags
- Red or blue flags available
- One piece feature allows for easy attachment and removal
- Requires no installation tools or adjusting
- Double unit holds one (1) or two (2) flags
- Fits 132lb, 133lb, and 136lb rail
- Made from durable corrosion resistant stainless steel
- Economical, lightweight, personnel presence warning

## J&A INDUSTRIES, INC.

14 S. Ewing Street Kansas City, KS 66118 PH (913) 281-5722 (800) 748-7722 FAX (913) 281-1401