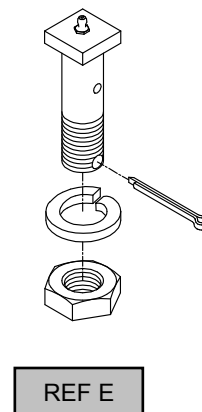
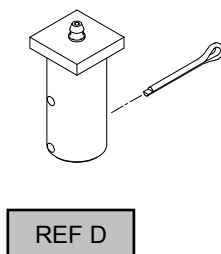
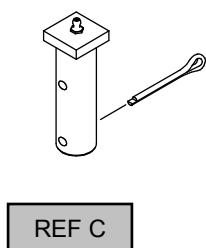
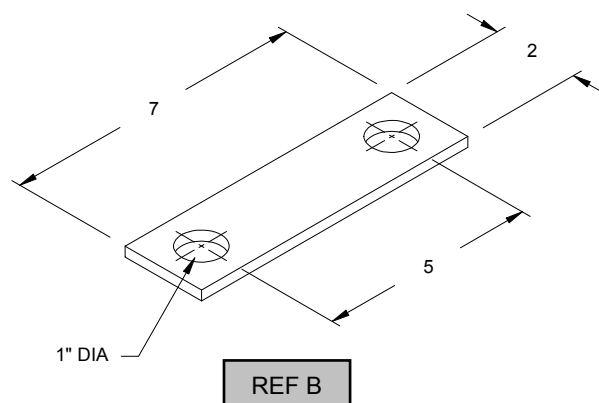
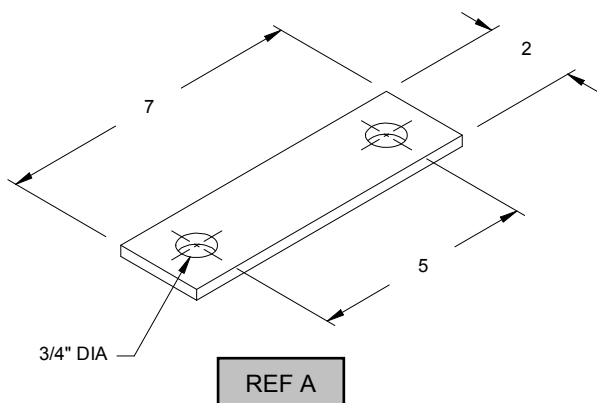


GRS

SWITCH COMPONENTS



REF	O.E.M. #	J&A #	DESCRIPTION
A	P91-146	150074-000	PLATE WASHER, 5" SPACING FOR 3/4" BOLTS
B	P91-145	150073-000	PLATE WASHER, 5" SPACING FOR 1" BOLTS
C	P91-100	225097-000	PIN, 7/8" X 2 1/4" W/ COTTER & GREASE FITTING
C1		225097-001	PIN, 7/8" X 2 1/2" W/ COTTER & GREASE FITTING
C2		225097-002	PIN, 7/8" X 3 3/16" W/ COTTER & GREASE FITTING
D		225440-000	PIN, JAW 1 1/8" X 2 1/4" LONG
D1		225440-001	PIN, JAW 1 1/8" X 3 1/4" LONG
D2		225440-002	PIN, JAW 1 1/8" X 5 1/4" LONG
E	P91-120	225106-000	BOLT, SQUARE HEAD, 7/8-9 X 3 1/16"
E1		225106-001	BOLT, SQUARE HEAD, 7/8-9 X 3 1/2"
E2	P91-120N	225106-002	BOLT, SQUARE HEAD, 7/8-9 X 5 1/2"

J&A INDUSTRIES, INC.

14 S. Ewing Street Kansas City, KS 66118 PH (913) 281-5722 (800) 748-7722 FAX (913) 281-1401