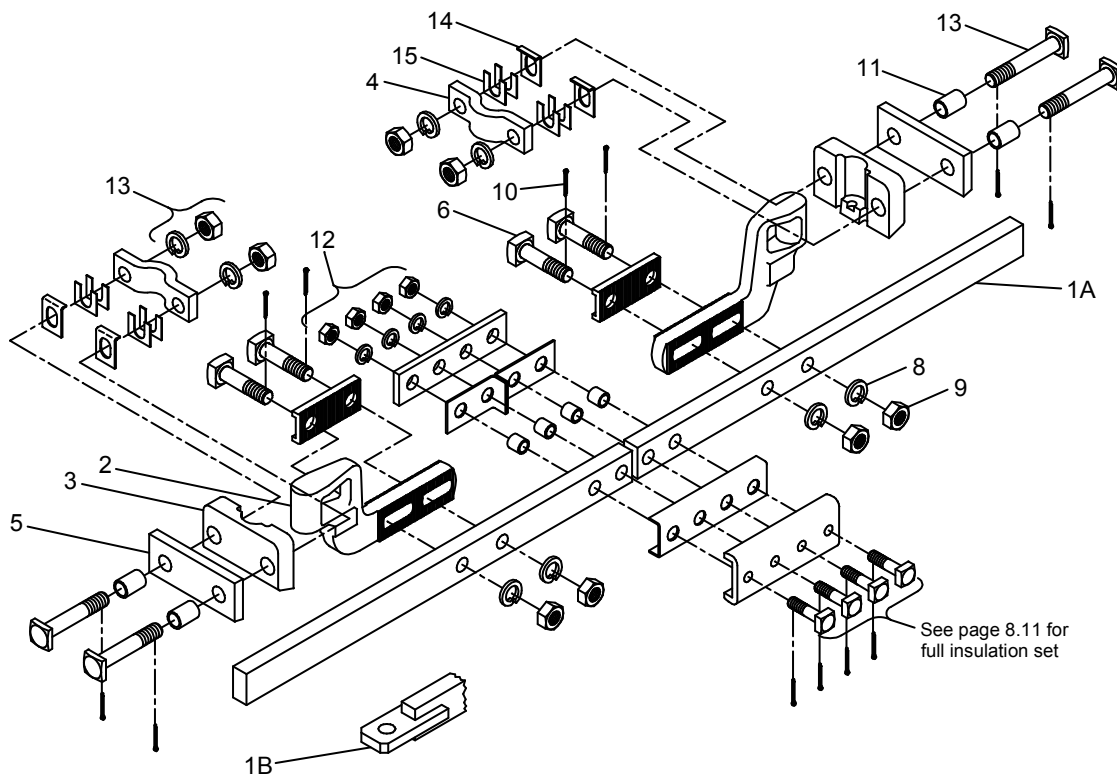


FRONT RODS

SMJ STYLE



225350-XXX

BASKET TYPE	X
NONE	0
US&S BASKET	1
GRS BASKET	2

BAR TYPE	X
STRAIGHT BAR	0
TANGED BAR	1

BOLT LENGTH	X
5 1/2"	0
6	1
6 1/2"	2

REF	J&A #	DESCRIPTION
	225350-XXX	ASSEMBLY, FRONT ROD, SMJ STYLE
1A	140466-000	BAR, TRANSIT, STRAIGHT
1B	160278-000	BAR, TRANSIT, TANGED
2	110080-001	LUG, SWIVEL
3	110084-001	LUG BODY, SWIVEL
4	110081-001	LUG RETAINER, SWIVEL
5	110082-000	PLATE, SWIVEL LUG, 3/4" THICK
6	140590-000	SCREW, SQUARE WITH HOLE, 1-8 X 5" Z/P
7	110083-001	PLATE, SERRATED WITH 2 HOLES
8	013000-012	WASHER, SPLIT LOCK, 1" Z/P
9	013115-012	NUT, HEAVY HEX, 1-8 Z/P
10	014001-1124	PIN, COTTER, 1/4" X 1 1/2" Z/P
11	150219-000	SPACER, SHIPPING, FOR SHIPMENT ONLY
12A	180180-002	KIT, INSULATION, SPLICE
12B	180132-002	KIT, INSULATION, US&S BASKET
12C	180049-002	KIT, INSULATION, GRS BASKET
13A	180087-004	KIT, BOLT, TRACK, 1-8 X 5 1/2"
13B	180087-005	KIT, BOLT, TRACK, 1-8 X 6"
13C	180087-006	KIT, BOLT, TRACK, 1-8 X 6 1/2"
14	014086-000	SHIM, RETAINER (T-9)
15	014087-000	SHIM, ADJUSTMENT (T-6)

INSULATION & BRACKETS

US&S basket, see page 4.10

GRS basket, see page 2.11

Insulation set for SMJ front rod without a basket, see page 8.10

Insulation set for SMJ front rod with US&S basket, see page 8.9

Insulation set for SMJ front rod with GRS basket, see page 8.8

J&A INDUSTRIES, INC.

14 S. Ewing Street Kansas City, KS 66118 PH (913) 281-5722 (800) 748-7722 FAX (913) 281-1401