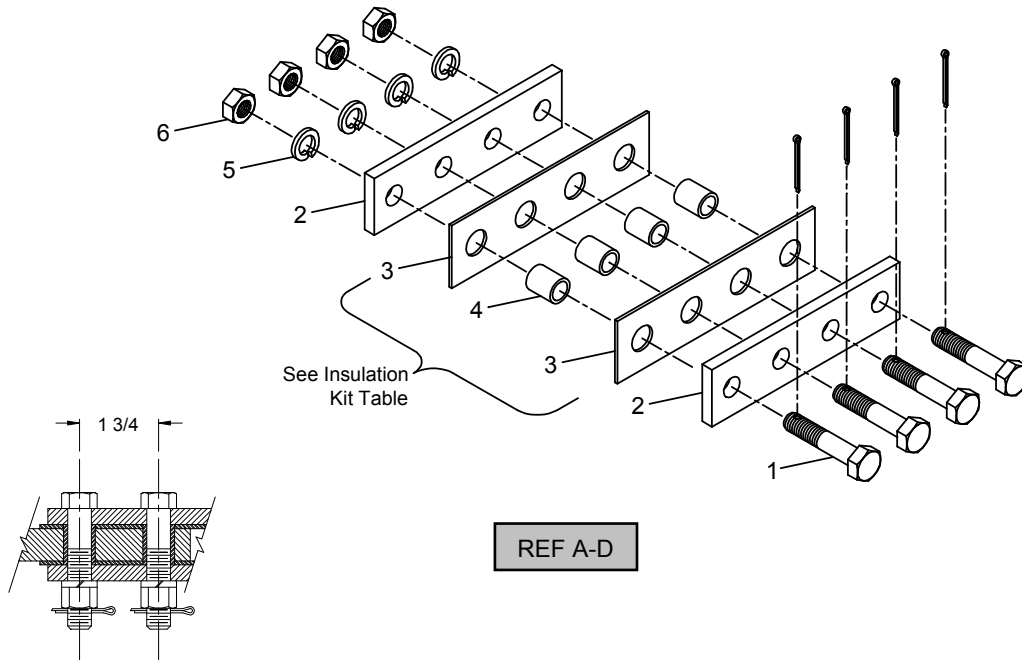


INSULATION

GRS POINT DETECTOR & SWITCH CIRCUIT RODS



REF	J&A #	DESCRIPTION
A	180033-000	KIT, INSULATOR SET FOR 1/2" BAR WITH SQUARE HEAD HARDWARE
B	180033-001	KIT, INSULATOR SET FOR 1/2" BAR WITH HEX HEAD HARDWARE
C	180033-002	KIT, INSULATOR SET FOR 1/2" BAR WITH HEX HEAD AND COTTER PIN
D	180033-003	KIT, INSULATOR SET FOR RAIL LOCK DETECTION ROD
1A	013217-440	SCREW, SQUARE, 1/2-13 X 2 1/2" (FOR -000)
1B	013000-008	SCREW, HEX, 1/2-13 X 2 1/2" (FOR -001)
1C	140471-000	SCREW, HEX WITH HOLE, 1/2-13 X 2 1/2" (FOR -002 AND -003)
1D	140471-001	SCREW, HEX WITH HOLE, 1/2-13 X 2 3/4" (FOR -003)
2	140148-000	PLATE, CONNECTOR, 3/8" THICK
3	027017-000	PLATE, INSULATOR WITH 4 HOLES
4	027018-000	BUSHING, INSULATOR FOR 1/2" BARS
5	013000-008	WASHER, SPLIT LOCK, 1/2"
6A	013121-008	NUT, HEAVY SQUARE, 1/2-13 Z/P (FOR -000)
6B	013115-008	NUT, HEAVY HEX, 1/2-13 Z/P (FOR -001, -002, AND -003)
7	014001-0616	PIN, COTTER, 1/8" X 1" Z/P (FOR -002 AND -003)

Insulation Kit

J&A #	DESCRIPTION
180416-000	KIT, INSULATION FOR SWITCH CIRCUIT ROD

J&A INDUSTRIES, INC.

14 S. Ewing Street Kansas City, KS 66118 PH (913) 281-5722 (800) 748-7722 FAX (913) 281-1401